



**Beyond SAP  
S/4HANA Migrations:**

**Unlock Efficiency  
with Semarchy  
xDM & Apgar's  
SAP Accelerators**

## INTRODUCTION:

# Navigating the Complexities of SAP S/4HANA Migrations

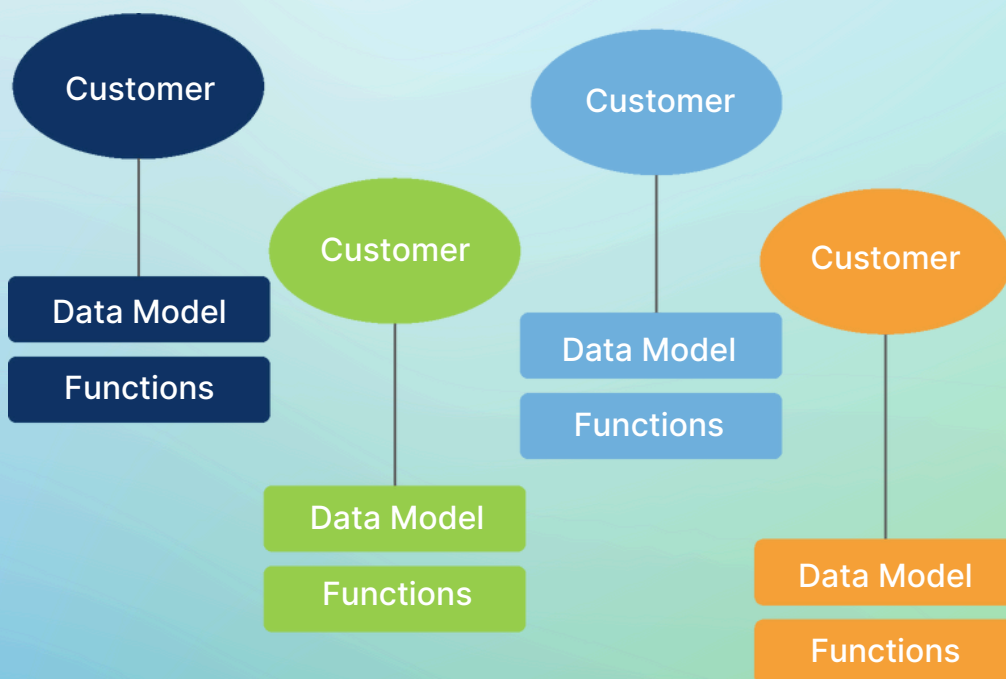
Migrating to SAP S/4HANA is a massive undertaking for enterprises, and for many, the journey is fraught with obstacles. A recent survey revealed that 77% of data leaders reported poor and fragmented data management strategies while moving to SAP S/4HANA. In addition, many companies faced a lack of expertise, data duplication issues, and difficulties integrating both SAP and non-SAP systems, creating data silos that hinder operational efficiency and drive up costs.

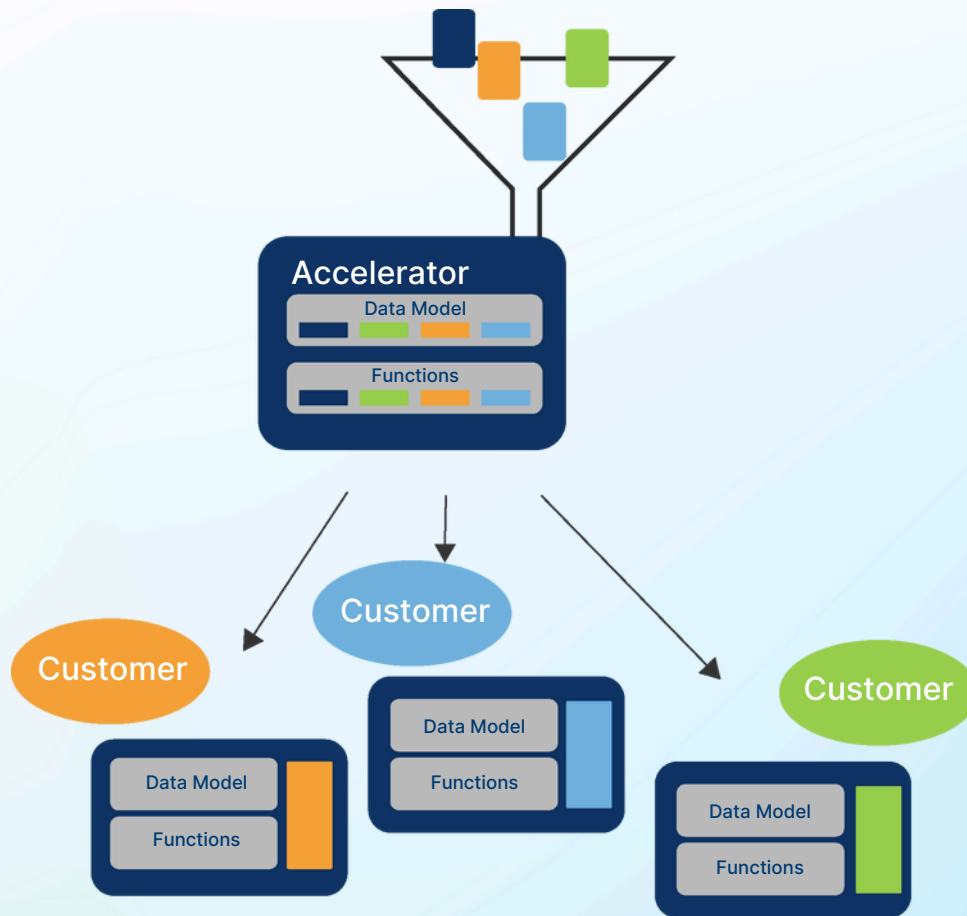
With SAP's deadline for ending support for ECC systems in 2027 fast approaching, businesses are feeling the pressure to migrate. Organizations have already begun preparations for the switch, but traditional SAP migration methods come with their own set of challenges—protracted timelines, costly implementations, and unfriendly user interfaces being chief among them.

That's why Semarchy and Apgar have come together to provide a different path forward for SAP users. This strategic partnership brings a revolutionary approach to data management, combining Semarchy's powerful Master Data Management (MDM) solution, xDM, with Apgar's specialized SAP Accelerators, and simplifying the migration process.

Data Accelerators are sophisticated templates, encompassing various technologies and addressing specific business scenarios. These accelerators can be tailored to align with the unique requirements of a business process, thereby expediting your implementation, diminishing time-to-value, and mitigating the risks associated with data discrepancies.

These accelerators come equipped with pre-constructed Data Models, pre-configured Interfaces and Mapping, and pre-built workflows, standardized for Finance, Material, and Business Partner MDM, gearing your team with the tools they need to significantly reduce the time and effort required to migrate from legacy SAP systems to S/4HANA. Together, they offer a faster, more flexible, and cost-effective solution that empowers businesses to overcome the common pitfalls of SAP S/4HANA migrations.





## The Limitations of SAP S/4HANA: Breaking Down the Challenges

SAP S/4HANA is the latest iteration of SAP's ERP (Enterprise Resource Planning) software, designed to help organizations manage everything from financials and supply chain logistics to human resources and procurement. Unlike the older SAP ECC (ERP Central Component) system, SAP S/4HANA is built on the HANA (High-Performance Analytic Appliance) database, a powerful in-memory computing platform. This upgrade allows for faster data processing and real-time analytics, enabling organizations to make more informed decisions at a much quicker pace. However, while SAP S/4HANA represents a leap forward in terms of technology and capability, the migration process from ECC to S/4HANA is not without significant hurdles.

## Key Differences Between SAP ECC and SAP S/4HANA

**Database Architecture:** ECC systems run on third-party databases like Oracle or Microsoft SQL Server, whereas S/4HANA runs exclusively on the HANA database. This means enterprises must completely migrate their existing data to this new architecture, which can be both complex and costly.

**User Experience (UX):** SAP S/4HANA uses SAP Fiori, a modern, role-based user interface designed to enhance usability. While this is a marked improvement over ECC's outdated user interface, it requires additional training and adaptation for users familiar with the legacy system.



**Simplified Data Models:** S/4HANA uses simplified data structures compared to ECC, which can lead to faster data processing and reduced data footprints. However, adapting existing customizations and integrations from ECC to the new data model can be time-consuming and difficult.

**Cloud Capabilities:** SAP S/4HANA is available in both on-premises and cloud versions, offering more flexibility than ECC. However, for organizations transitioning to a cloud-based system for the first time, the migration can introduce new complexities around security, compliance, and data sovereignty.

## Challenges Enterprises Face When Migrating to S/4HANA

Despite the potential benefits of S/4HANA, enterprises often encounter several significant challenges during the migration process:

**Data Migration Complexity:** Moving from ECC to S/4HANA requires a complete overhaul of the underlying data structure. Legacy data must be mapped to the new data models, a process that often results in data inconsistencies, duplication, and loss of important records. Many enterprises lack the internal expertise to manage this complex migration, leading to delays and additional costs.

**Data Fragmentation:** Managing fragmented data becomes an overwhelming challenge for companies with operations spread across different countries and business units. SAP S/4HANA often can't manage diverse datasets, which can severely impact the ability to maintain a unified, accurate view of data.

**Custom Code and Integrations:** Organizations that have customized their ECC environments face additional hurdles when migrating to S/4HANA. Custom code that was built to work with ECC's architecture may not function properly in the new system and needs to be rewritten or replaced entirely. Additionally, third-party integrations (non-SAP systems) often struggle to integrate data properly or may not be compatible with S/4HANA. This presents a serious challenge for enterprises that rely on multiple ERP or CRM systems from different vendors, resulting in data silos and inefficiencies.

**High Implementation Costs:** Migrating to S/4HANA is costly, with some projects running into the millions. Beyond software costs, companies must invest heavily in consulting, training, and custom development to ensure a successful migration. This high cost can be prohibitive, particularly for mid-sized businesses.

**Disruption to Business Operations:** Given the complexity of the migration process, organizations often experience significant disruptions to business operations. Many companies report long downtimes and slow adoption rates, some as long as 1-2 years, as employees need extensive training to adapt to the new system. This operational downtime can have serious financial repercussions, particularly in industries that rely on real-time data processing.



**Data Governance and Compliance:** Ensuring data governance and regulatory compliance is another major concern. Organizations that operate in multiple countries must certify that their data management practices meet local compliance requirements (e.g., GDPR in Europe, CCPA in California), which can be difficult to achieve with a fragmented data landscape from a migration. SAP S/4HANA's Master Data Governance (MDG) solution is often bundled with the platform, but many enterprises find it rigid and difficult to customize. User interfaces are clunky and not tailored to business-specific processes. This inflexibility creates additional headaches for teams that need to adapt workflows or manage hierarchical structures across diverse business units.

These issues can make S/4HANA migrations more time-consuming and expensive than expected, forcing organizations to look beyond SAP's native solutions for help. This is where the strategic partnership between Semarchy and Apgar comes in, offering faster, more flexible, and cost-effective solutions to overcome these challenges.

## How Semarchy and Apgar Transform SAP Migrations

Semarchy, in partnership with leading MDM consultant group Apgar, provides a comprehensive solution for businesses looking to streamline their SAP S/4HANA migrations. The partnership combines Semarchy's innovative data platform with Apgar's consulting expertise, offering a seamless integration of technology and strategy. By working together, they are able to address the most common challenges faced during migration—including data fragmentation, high costs, and complex integration needs.

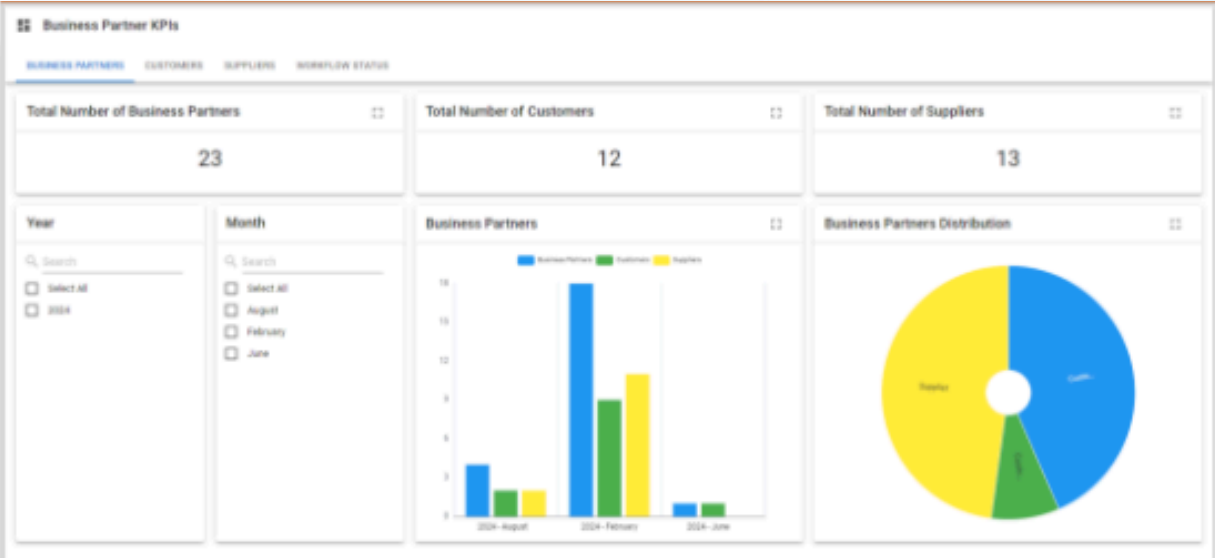
Apgar's SAP Accelerators were specifically designed to address the major pain points associated with SAP S/4HANA migrations and streamline and enhance your Master Data Management (MDM) initiatives across Business Partner, Finance, and Material domains, providing a solid foundation right from the start.

The accelerators provide pre-built data models and workflows that drastically reduce the time and effort required to migrate data from legacy systems to S/4HANA. These accelerators were developed based on Apgar's extensive experience with enterprise clients and their deep understanding of the obstacles that arise during migration.

## Apgar Business Partner Accelerator



The Apgar Business Partner Accelerator offers a turnkey solution that helps manage and maintain third-party data effectively. It leverages a standardized data model that is fully compatible with SAP S/4HANA, ensuring adherence to governance best practices. This accelerator includes pre-built templates for managing customers, vendors, and employee data, significantly reducing implementation time and costs. The solution is highly customizable, allowing organizations to tailor the accelerator to meet specific business needs and streamline the integration of business partner data within their SAP environment.



## Apgar Finance Accelerator

Chart of  
Accounts

Profit Center

Internal Order

Cost Center

Functional  
Area

Reference  
Data

The Apgar Finance Accelerator replaces traditional methods, such as Excel sheets, for managing finance master data. This pre-built template facilitates governance, flexibility, and data validation across ERP and consolidation systems. It includes comprehensive data models, interfaces, and workflows that simplify the management of financial data. Customizable to fit various business requirements, the accelerator supports the mapping between local and global hierarchies, enhancing the financial data's accuracy and governance.

## Apgar Material Accelerator

Material

Bill of Material  
(BoM)

Hierarchies

Material Type

API

Workflow

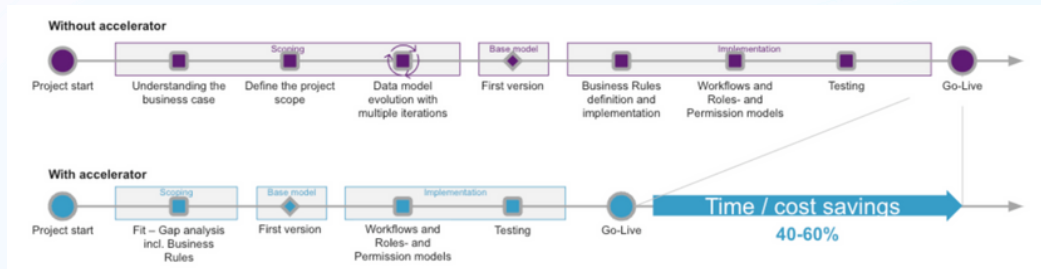
Designed to align with the SAP S/4 data model, the Apgar Material Accelerator streamlines material master data management. This solution offers a pre-built template with predefined attributes and relationships, ensuring quick and efficient implementation. It simplifies material governance and mapping to SAP S/4, providing a flexible framework that can be customized to meet specific material types, attributes, and views. This customization capability makes it an ideal choice for organizations looking to reduce implementation times and enhance the management of material master data.



Materials				
Materials (248)				
Material	Material Type	Base Unit Of Measure	Industry Sector	Material C
	Finished Product - Nu...	Each (Individual Item)	Photography	Cameras
	Beverage - Numeric	Each (Individual Item)	Food and Beverages	DRINKS
	Beverage - Numeric	Each (Individual Item)	Food and Beverages	DRINKS
	Beverage - Numeric	Each (Individual Item)	Food and Beverages	DRINKS
	Beverage - Numeric	Each (Individual Item)	Food and Beverages	DRINKS
	Beverage - Numeric	Each (Individual Item)	Food and Beverages	DRINKS
	Beverage - Numeric	Each (Individual Item)	Food and Beverages	DRINKS
	Beverage - Numeric	Each (Individual Item)	Food and Beverages	DRINKS
	Beverage - Numeric	Each (Individual Item)	Food and Beverages	DRINKS
	Beverage - Numeric	Each (Individual Item)	Food and Beverages	DRINKS
	Beverage - Numeric	Each (Individual Item)	Food and Beverages	DRINKS
	Beverage - Numeric	Each (Individual Item)	Food and Beverages	DRINKS
	Beverage - Numeric	Each (Individual Item)	Food and Beverages	DRINKS

Materials > 10000 - ActionCamera							
10000 - ActionCamera ActionCamera							
MATERIAL	DESCRIPTION	UNIT OF MEASURE	PLANT	SALES	LEGAL CONTROL	ID NUMBERS	TRACKING
Material Number	10000	Base Unit Of Measure	Each (Individual Item)				
Material Type	Finished Product - Numeric	Short Text	ActionCamers				
Industry Sector	Photography	Attachment URL					
Basic Data 1							
General Data							
Material Group	Cameras	Serialization Level					
Old Material Number	8.5047.46	Material Qualifies For Discount In ...					
Division		Material Group Packaging Materials					
Prod Category Hierarchy		Reference Material For Materials ...					
Cross Plant Material Status		Packaging Material Type					
Cross Distribution Chain Material ...		Transportation Group					
Valid From		Order Unit					

## Key Benefits of the SAP Accelerators:

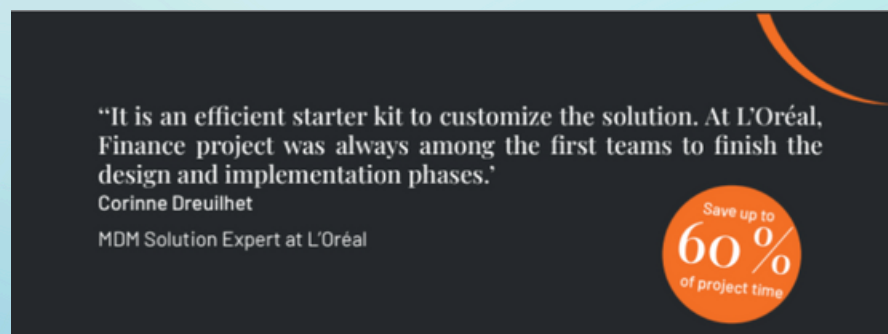


- **Faster Migration:** By leveraging pre-configured data models and intelligent workflows, the accelerators shorten the implementation timeline from years to months, enabling businesses to see faster results.
- **Improved Data Quality:** The accelerators enhance data quality by reducing duplication and ensuring consistency across systems, making it easier for businesses to maintain accurate and governed data.
- **Seamless Integration:** One of the biggest challenges in SAP migrations is integrating data from non-SAP systems. Apgar's accelerators make it easier to bring data from diverse systems into a single, unified platform for smooth operations across all business units.
- **Cost Savings:** The streamlined migration process reduces the overall cost of implementation, making SAP S/4HANA migrations more accessible to businesses with limited budgets.

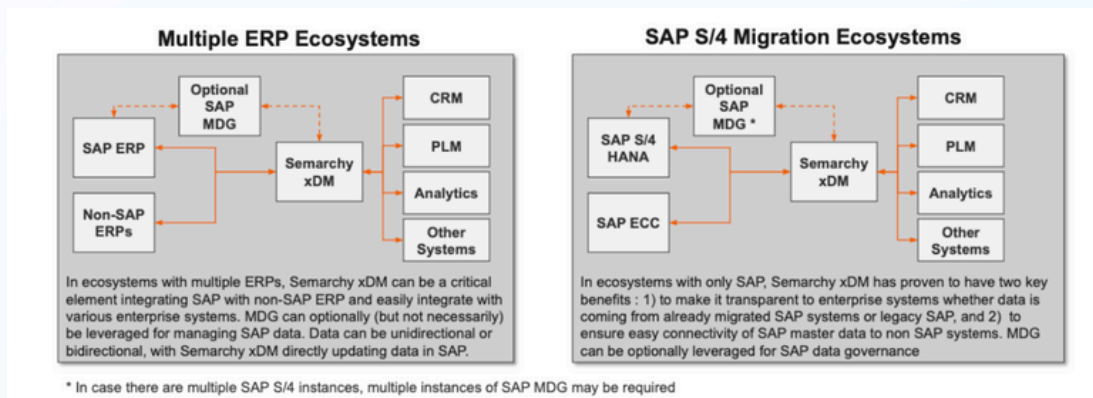
## Semarchy xDM: The Flexible and Agile MDM Solution

Semarchy's xDM platform is renowned for its agility, user-friendly interface, and rapid time-to-value. Unlike SAP MDG, which is rigid and difficult to customize, Semarchy xDM allows companies to tailor data models, workflows, and hierarchies to fit their specific business needs. Some key differentiators include:

- **Multi-Domain Flexibility:** Semarchy xDM is a multi-domain MDM solution, which means it can manage a variety of data types across different departments—whether it's product data, customer data, or supplier information. This is especially useful for organizations with complex, multi-ERP ecosystems.
- **Cost-Effective Deployment:** Where SAP MDG often takes years to implement, Semarchy xDM can be up and running in a matter of months. Deployments typically range from 3 to 9 months, significantly reducing implementation costs and allowing companies to start realizing value much sooner.



- **Customizable User Experience:** With xDM, users can customize the interface, workflows, and hierarchies to fit the unique needs of their business units. This flexibility guarantees that all stakeholders—from data governance teams to business users—can work effectively without having to deal with cumbersome processes.



By offering a cost-effective, flexible, and user-friendly alternative to traditional data management solutions like SAP MDG, Semarchy empowers businesses to take control of their data, drive better decision-making, and improve operational efficiency.

## Apgar's SAP Accelerators: Speeding Up Migration and Enhancing Data Quality

Apgar's SAP Accelerators complement Semarchy xDM by providing the tools necessary to expedite and simplify the SAP S/4HANA migration process. These accelerators are designed to address the specific data challenges faced during migration and provide several benefits:

- **Pre-Built Data Models and Workflows:** The accelerators come with ready-to-deploy data models and workflows that eliminate much of the heavy lifting typically required in SAP migrations. This drastically reduces implementation timelines and minimizes the complexity of the migration process. Apgar Accelerators include the following components.

	<b>Data model</b>	Data model with tables and attributes for the corresponding technology.
	<b>Business Glossary</b>	Business Glossary (Excel) to easily validate and extend the model.
	<b>Business Rules</b>	Business Rules on multiple levels.
	<b>Roles and permissions</b>	Roles and permissions model.
	<b>Workflows</b>	Basic workflows for creation and update.

- **Enhanced Data Governance and Quality:** By utilizing the SAP Accelerators, businesses can improve data governance and quality. The accelerators include intelligent deduplication algorithms and real-time visibility features, which help organizations maintain a single source of truth and ensure that data across the enterprise is accurate, consistent, and governed.
- **Seamless Integration with SAP and Non-SAP Systems:** Apgar's accelerators allow for seamless integration with both SAP and non-SAP systems so companies can manage data across multiple platforms without the risk of creating silos.

By combining Semarchy's xDM platform with Apgar's SAP Accelerators, businesses can achieve a faster, more efficient migration process while ensuring their data is accurate, well-governed, and easily accessible.



## Bridging the Gap with SAP Accelerators

Apgar's SAP Accelerators were designed with one key goal: to bridge the gap between SAP S/4HANA and the complex data needs of modern enterprises. These accelerators provide the following advantages:

1. **Faster Time-to-Value:** By leveraging pre-built models and workflows, companies can bypass many of the lengthy implementation steps typically associated with SAP migrations. Apgar's accelerators can reduce migration times from years to months, providing a clear ROI in a much shorter time frame.
2. **Scalability and Flexibility:** The accelerators are scalable to support future growth, allowing businesses to evolve and adapt their data management systems as new needs arise. This is critical for companies planning future digital transformation initiatives, such as integrating AI and advanced analytics.
3. **Comprehensive Data Management:** Apgar's accelerators provide enterprises with the ability to manage data across SAP and non-SAP systems, reducing silos and improving the quality and accessibility of data across the organization.
4. **Cost Reduction:** By streamlining processes, improving data governance, and eliminating redundancy, the accelerators help companies significantly reduce operational costs associated with data management.

## Case Study: Savencia's Transformation with Semarchy xDM

Savencia, an international food group with over €7 billion in revenue, faced significant challenges in managing customer data across 50 subsidiaries in 120 countries. With over 180,000 customer records spread across multiple ERP systems, including the SAP ERP, the company struggled with data fragmentation, inefficient data management, and slow time-to-value.

“ The deduplication process in the subsidiaries' SAP systems was extremely rapid thanks to the power of Semarchy's xDM tool. Semarchy's algorithms quickly enabled us to detect errors, highlight existing issues, and provided intelligent consolidation suggestions,” - Philippe Mallard.

In 2016, Savencia turned to Semarchy's xDM solution to address these challenges. The results were remarkable:

- **Rapid Data Consolidation:** Within just three months, Semarchy xDM enabled Savencia to consolidate 180,000 customer records into 27,000 golden records. This reduction in data redundancy significantly improved the quality and accuracy of Savencia's customer data.
- **Improved Data Governance:** By implementing a centralized data repository and customer data hierarchy, Savencia gained real-time visibility and enhanced governance across its global operations. This allowed the company to make more informed, data-driven decisions.
- **Operational Efficiency and Cost Savings:** The switch to Semarchy xDM reduced the time needed for manual data reconciliation, saving valuable resources for Savencia's commercial teams. Additionally, the cost of managing customer data was drastically reduced, improving overall operational efficiency.
- **Foundation for Digital Transformation:** With a unified and governed data foundation in place, Savencia is now well-positioned to explore advanced technologies like AI to enhance its operations further.

To learn more, download the full case study.

## The Power of Integration: Semarchy xDI for Seamless Data Connectivity

One of the biggest challenges in SAP S/4HANA migrations is managing data from multiple systems. Enterprises often rely on a mix of ERP, CRM, and legacy platforms, which can create significant bottlenecks when trying to integrate data during the migration process. [Semarchy's xDI](#) (Data Integration) module offers a powerful solution to these integration challenges.

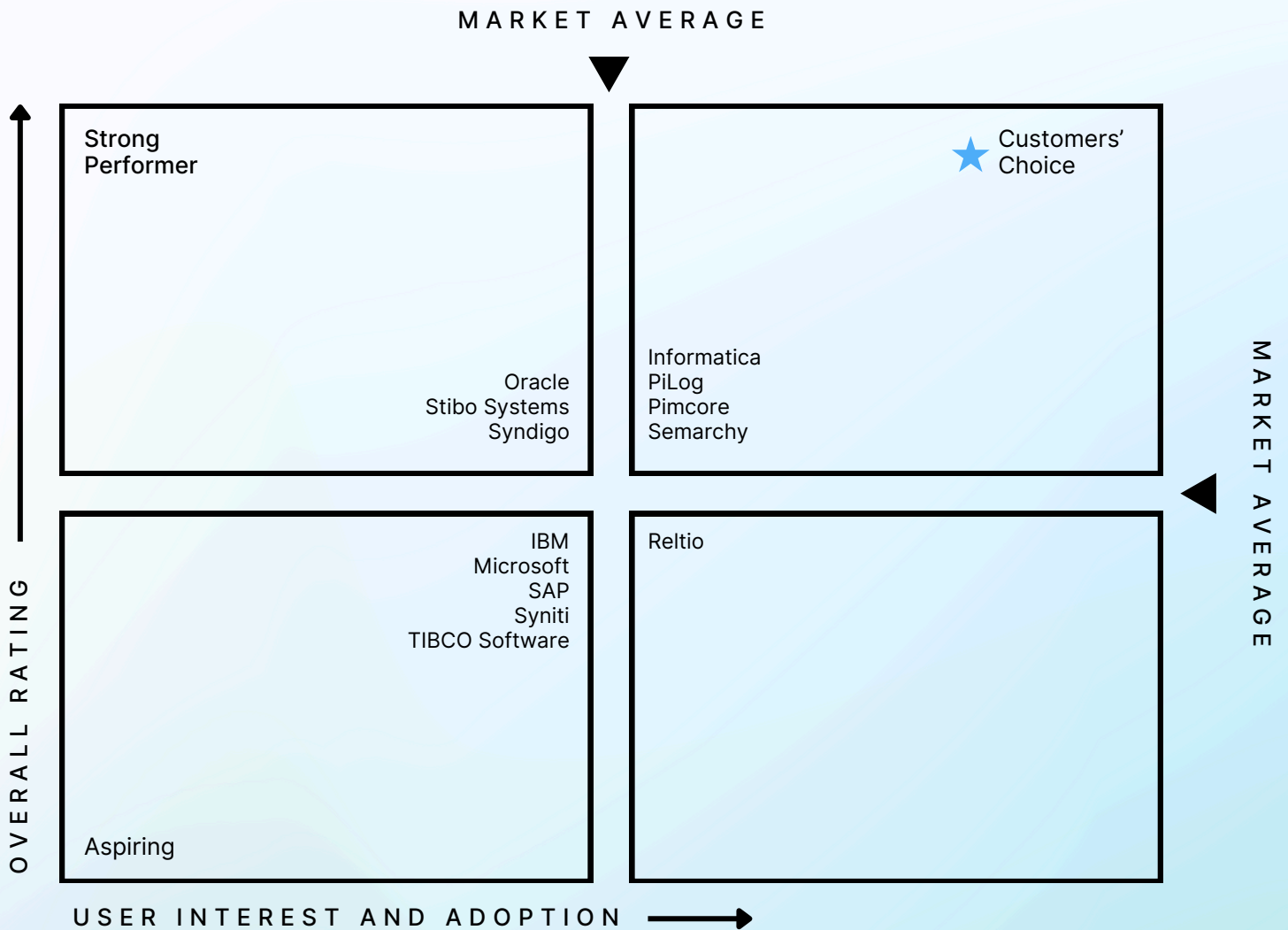
With xDI, companies can seamlessly connect both SAP and non-SAP systems, consolidating data into a single source of truth. This results in a golden record—an authoritative, accurate version of key data merged from multiple sources. For instance, in large enterprises, customer information might exist in different formats across various systems. Semarchy xDI brings these disparate records together into one consistent golden record, eliminating redundancies, inconsistencies, and errors.

Maintaining golden records equals high-quality data, enabling better decision-making and smooth operations across all departments. The bi-directional data flows supported by the xDI platform allow for continuous data consistency and governance, regardless of where the data originates. This capability is crucial in managing complex data environments, helping organizations maintain accuracy and trust in their data at every touchpoint.

## Semarchy: A Leader in Data Management

Semarchy has established itself as a leading provider of Master Data Management (MDM) and data integration solutions, offering businesses a powerful platform to consolidate, manage, and govern their critical data. Semarchy's flagship product, xDM, is widely recognized for its ability to streamline complex data landscapes so businesses can access accurate, real-time information across their operations.

- **Gartner Peer Insights:** Semarchy has consistently earned the [Customers' Choice](#) distinction, with a 4.8-star rating (out of max. 5) and 100% of customers recommending us in the last 12 months based on real-world feedback. Our xDM platform's success across various industries, from finance to retail, has solidified Semarchy as a reliable choice for data management.
- **Gartner Magic Quadrant:** Semarchy has been named a **Leader in Gartner's Magic Quadrant for Master Data Management Solutions** six times, further emphasizing our position as a top player in the MDM space. Our ability to deliver scalable, efficient, and innovative solutions continues to drive us forward as an industry leader.



## Apgar: Experts in SAP Integration & Data Governance

Apgar, a global consulting firm, has been recognized as a key player in the data management and governance space, particularly within the SAP ecosystem. Apgar brings deep expertise in SAP migrations, data governance, and digital transformation, making them an ideal partner for enterprises navigating the complexities of SAP S/4HANA.

- Gartner Recognition:** Apgar has consistently been recognized by Gartner as one of the 18 major MDM External Services Providers worldwide, underscoring their influence and leadership in the field. Their inclusion in Gartner's toolkit for the "Vendor Identification and Selection Guide for AI and Data and Analytics Service Providers" further solidifies their position as a go-to partner for businesses looking to transform their data landscapes.
- SAP-Specific Solutions:** Apgar's focus on SAP MDM and their experience with large-scale enterprise migrations make them uniquely qualified to help businesses transition from legacy systems like SAP ECC to the more advanced S/4HANA platform. Their ability to customize solutions for industries such as finance, insurance, retail, and manufacturing has allowed Apgar to drive successful outcomes for clients across a variety of sectors.



## The Strategic Benefits of Choosing Semarchy and Apgar

For companies facing the monumental task of migrating to SAP S/4HANA, the partnership between Semarchy and Apgar offers a comprehensive, scalable solution that addresses many of the challenges inherent in traditional SAP migrations. By combining Semarchy's agile and cost-effective MDM platform with Apgar's SAP Accelerators, enterprises can enjoy faster time-to-value, improved data quality, and a seamless integration experience.

Savencia's success story illustrates the power of this partnership, demonstrating how even complex, global organizations can streamline their data management processes and achieve significant operational improvements.

If you're ready to transform your SAP S/4HANA migration and unlock the full potential of your data, get started with Semarchy or contact Apgar to learn more about how their SAP Accelerators can revolutionize your migration journey.

**GET STARTED**

**CONTACT APGAR**